

# FX25

## PICK & CARRY CRANE



### STANDARD EQUIPMENT

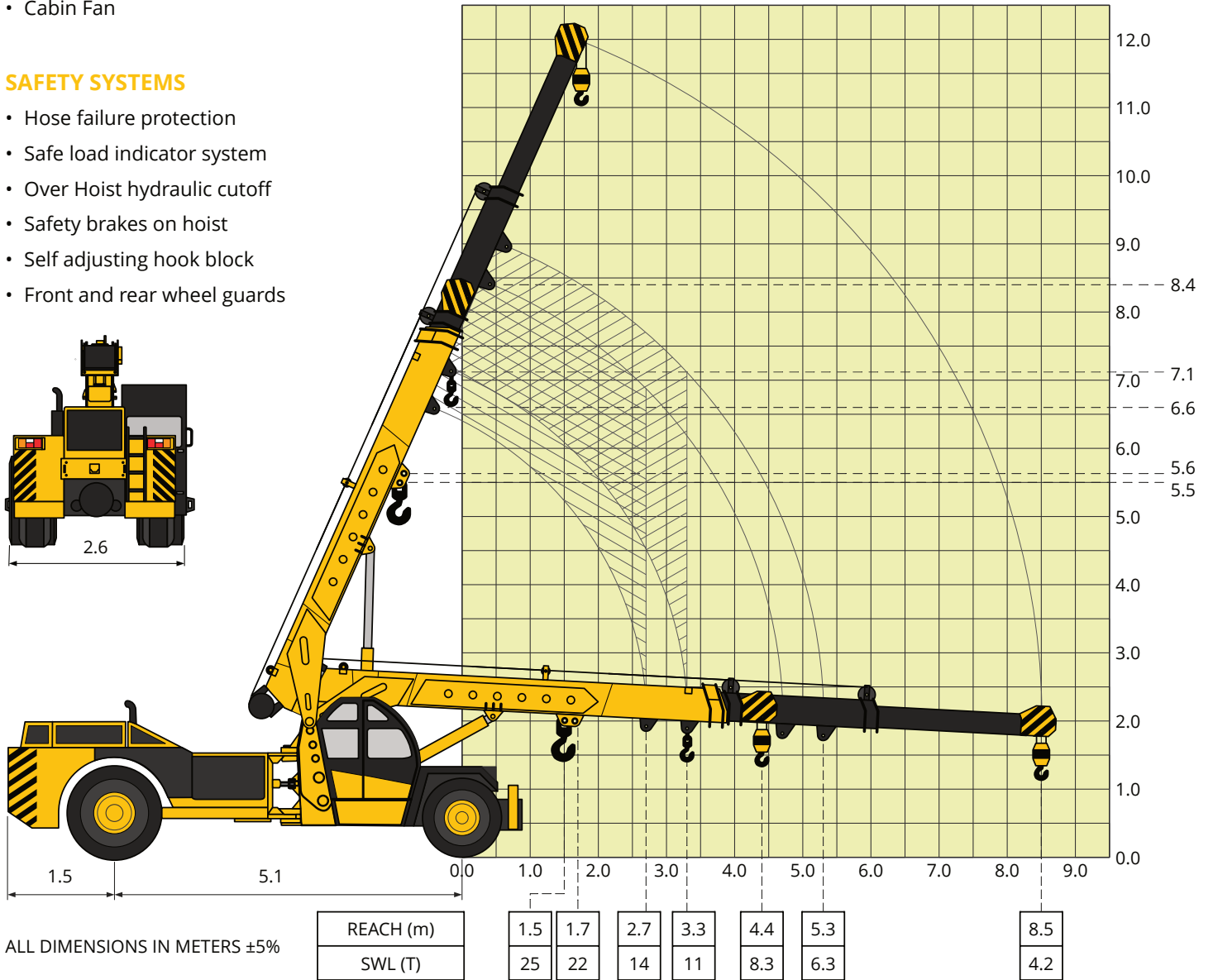
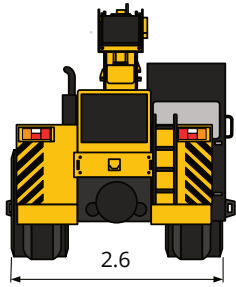
- Outriggers
- Front mounted fully enclosed wide view cabin
- Rear View Camera
- Front and rear work lights
- Beacon rotating light
- Reflectors & Rear View Mirrors
- Cabin Fan

### OPTIONAL EQUIPMENT

- Front and side Proximity Sensors
- Cabin Front Glass Protector
- Helper/Slinger Seat
- Spark arrester
- Fire Extinguisher
- Drag winch

### SAFETY SYSTEMS

- Hose failure protection
- Safe load indicator system
- Over Hoist hydraulic cutoff
- Safety brakes on hoist
- Self adjusting hook block
- Front and rear wheel guards



ALL DIMENSIONS IN METERS ±5%

# SPECIFICATIONS

<b>RATED CAPACITY</b>	Max Weight	25.0 ton at 1.50 m radius
	Max Raduis	4.2 ton at 8.5 m radius
	Max Height	12.0 m
<b>BOOM</b>	Length	10.7 m
	Luffing Angle	-3 to 62 degrees
	Telescoping	3 part boom hydraulically powered & fully synchronised.
	Type	Slotted boom with rope compensation
	Derricking	Through double acting hydraulic cylinders
<b>DIMENSIONS</b>	Length	11 000 mm
	Width	2 600 mm
	Height	3 100 mm
<b>TRACK</b>	Front	1 900 mm
	Rear	1 770 mm
<b>WHEELBASE</b>		5 100 mm
<b>OPERATING WEIGHT</b>	Front	10 000 kg
	Rear	10 200 kg
	Total	20 200 kg
<b>PERFORMANCE</b>	Speed	max 35 km/hr
	Creep Speed	min 3.0 km/hr
	Gradeability	36% unladen
<b>ENGINE</b>	Make and Model	Ashok Leyland, 6 cylinder, water cooled diesel engine or equivalent, developing 99.2KW @ 2300 RPM
<b>TRANSMISSION</b>	Drive	2 wheel drive
	Type	Synchromesh gearbox. Speeds-8 forward and 2 reverse with hi-low selector
	Axles	Front axle is rigidly mounted on the chassis and rear drive axle is mounted with 2 nos. leaf springs
	Clutch	Single, dry type friction clutch plate
<b>STEERING</b>	Type	Full power orbitrol with twin hydraulic double acting rams
	Articulation	40 degrees
	Turning Radius	8 200 mm
<b>TYRES</b>	Front	4 nos. - 12.00 x 24 - 20 PR
	Front	2 nos. - 17.50 x 25 - 20 PR
<b>BRAKES</b>	Service	Fully air operated 'S' cam dual circuit brakes on front & rear axles
	Parking	Air operated, spring actuated fail safe brakes
<b>HOIST MECHANISM</b>	Hook Block	15 T Hydraulically operated with 6 falls snatch block. Built in safety brakes
	Line Speed	50 m/min
<b>ELECTRICAL SYSTEM</b>		24 V, DC

